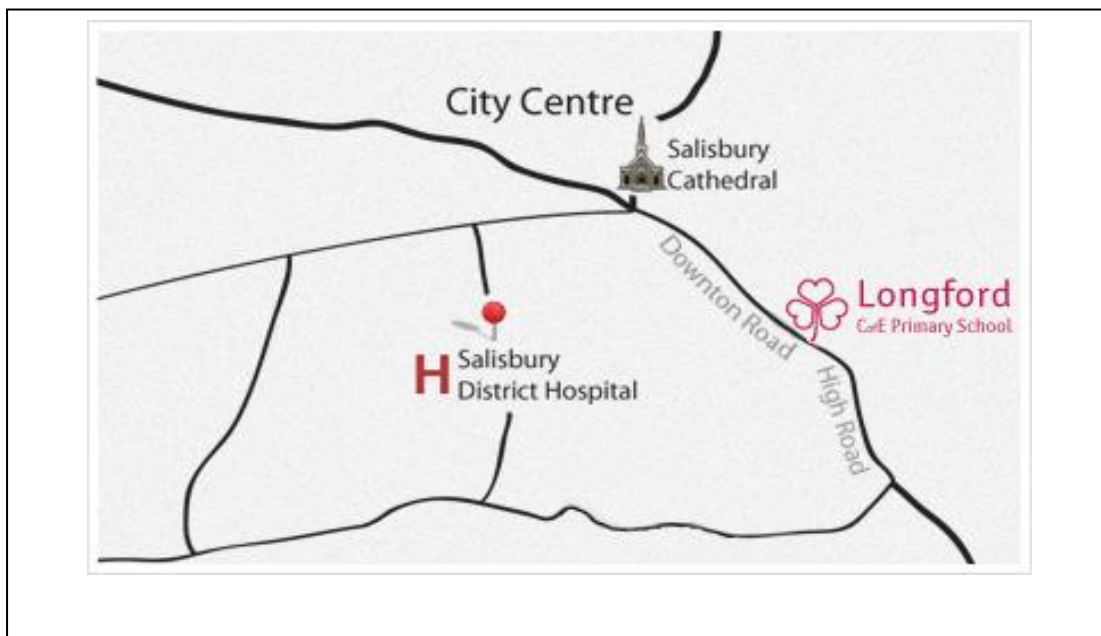




**LONGFORD C of E (VC) PRIMARY SCHOOL**  
High Road, Britford  
Salisbury  
Wiltshire SP5 4DS  
**DCSF Number: 865 / 3017**

# SCHOOL TRAVEL PLAN



Version 1.0

December 2015

<b>CONTENTS</b>	<b>PAGE</b>
<b>1. FOREWORD</b>	<b>3</b>
1.1 Background to School Travel Plans	3
1.2 Why we want a School Travel Plan	3
<b>2. INTRODUCTION</b>	<b>3</b>
2.1 School background	3
2.2 Our School	5
2.3 School Travel Plan working group	5
2.4 What we are doing already	5
2.5 Associated projects	6
2.6 Existing policies	6
2.7 Future developments	6
<b>3. SURVEY RESULTS</b>	<b>7</b>
<b>4. CURRENT PROBLEMS</b>	<b>15</b>
<b>5. OBJECTIVES, TARGETS &amp; ACTIONS</b>	<b>20</b>
<b>6. EVIDENCE OF CONSULTATION</b>	<b>27</b>
6.1 Pupils	27
6.2 Parents and carers	27
6.3 Staff	27
6.4 Governors	27
6.5 Wider consultation	27
<b>7. Proposals for monitoring and review</b>	<b>28</b>
<b>8. Proof of ownership and sustainability</b>	<b>28</b>
<b>9. Signatures of endorsement</b>	<b>29</b>
<b>Appendix:</b>	<b>30</b>

# **1. FOREWORD**

---

## **1.1 Background to School Travel Plans**

The Government through its 'Travelling to School Initiative' wanted to see all schools with a Travel Plan by March 2010, by bringing a step change in home-to-school travel patterns to cut congestion and pollution and also allowing many more pupils to take regular exercise.

School Travel Plans show how a school community intends to play its part in reducing unnecessary car travel for the school journey and promote more sustainable and healthy travel.

The School Travel Plan can set out measures:

- to reduce the number of car trips made to and from school, minimising congestion associated with "the school run".
- to promote the use of healthier and more environmentally friendly forms of transport following concerns over student health and lack of exercise.
- to improve safety during the journey to school and give children an opportunity to gain important road sense and independence.

## **1.2 Why we want a School Travel Plan**

Longford Primary School has prepared this School Travel Plan (STP) because we want to:

- provide a safer environment for pupils as the school is located on a busy 'A' road
- encourage the use of sustainable travel (walking, cycling, scooting, bus, car-share)
- promote the health benefits to children (and parents) of walking / cycling / scooting to school

NB. This is the first STP prepared by Longford Primary School.

# **2. INTRODUCTION**

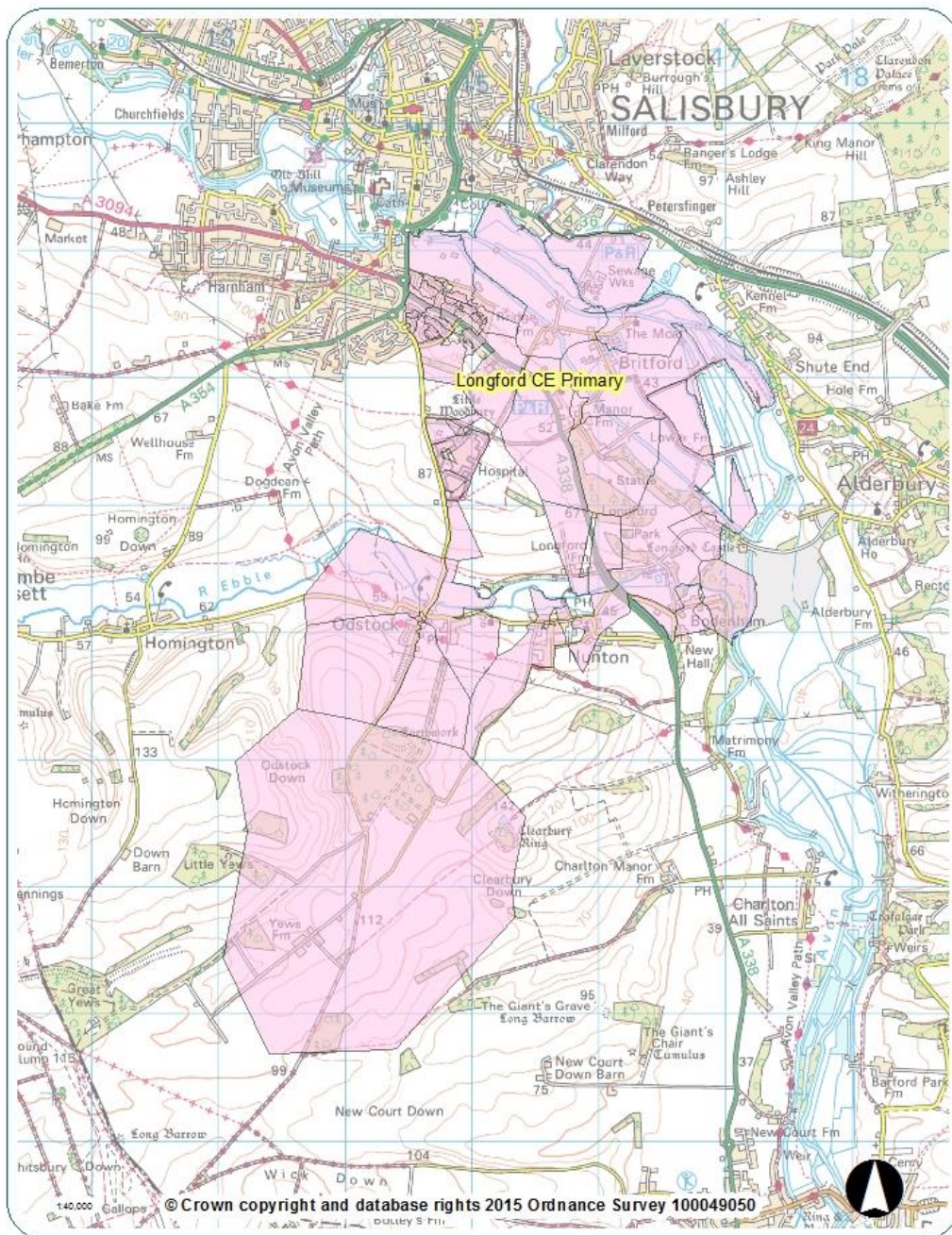
---

## **2.1 School Background**

Longford Primary School is located just off the A338 'Downton Road' on the outskirts of the city of Salisbury in the South of Wiltshire. The A338 is a busy road being the main route from Wiltshire to the South coast.

It is in an unusual location in that it is a 'rural' school but it is close to the city.

A school has been on this site since 1853 and was formerly known as Britford Primary School. Longford Primary School as we know it now was formed in 2010 following the merger of the village schools at Britford and Odstock. This means that the catchment area covers these 2 areas (Britford & East Harnham and Odstock, Nunton & Bodenham) thus its 'oval' shape.



Some children who attend the school are 'out-of-catchment'.

## **2.2 Our School**

There are currently 46 children on roll at the school (Sept 2015) split between 3 classes:

- Kestrels - 5 children (Reception) and 16 children (Year 1)
- Magpies - 5 children (Year 2) and 6 children (Year 3)
- Kingfishers - 6 children (Year 4), 2 children (Year 5) and 6 children (Year 6)

There is 1 Head teacher (full-time), 4 teachers (3 FTE) and 4 teaching assistants (mainly part-time).

The school day is 9:00 to 3:15 for all years. After school clubs run from 3:15-4:15pm on some days and child care is provided by an external company from 3:15-6:00pm every day.

Due to the merger of the school with Odstock Primary School, children from the villages of Nunton and Odstock are entitled to travel to school on the free school bus. 'Spare seats' on the bus are available to other children to purchase. The bus currently does not pick up from Bodenham.

There is a car park on site for staff and visitors. Parents are not entitled to park their cars on site and are encouraged to 'park and stride' i.e. park at the Britford Park & Ride site (free) which is less than 5 minutes walk away.

We currently have limited facilities promoting sustainable travel - there is a parental waiting shelter and staff have lockers. We are obtaining 2 cycle / scooter stands from the local secondary school but do not have a shelter for this.

## **2.3 School Travel Plan working group**

The working group was set up in June 2015 and consists of the Head teacher, 2 parent governors (one whose children walk from the South of the school and one who generally 'parks and strides') and 2 parents (one whose children walk from the North of the school and one whose children catch the school bus). This means hopefully the working group can capture all scenarios and views.

The School Council is currently not involved but we intend to do so as the STP evolves. It would also be good to link more with the Parish Councils in the area – Britford, Odstock and Harnham.

## **2.4 What we are doing already**

The school already engages its pupils in a variety of activities promoting sustainable travel and road safety as indicated below:

- School bus provided

- 'Park and stride' scheme
- There is a cycle path to the school along the A338 from the North of the school (from East Harnham)
- Children walk to church or use public transport to for school trip
- Curriculum activities – keeping fit (PE), keeping healthy (PHSE), 'Bikeability' booked for Year 6 pupils
- 'Walk Safe' (2013-14)
- Healthy School status (not current)
- Some children have high-visibility tabards
- 'Travelling to school' is included in school prospectus

## **2.5 Associated projects**

The Governors are currently trying to obtain 2 cycle / scooter stands (no shelter) from the local secondary school.

One of the Parent Governors on the working group has logged her concerns wrt the speed of traffic along the A338 with Britford Parish Council and the Area Board system.

Britford Parish Council has arranged metrocount of vehicles and also Police speed monitoring. The Chair of the Council is trying to set up a Community Speed Watch scheme but has not had enough volunteers.

## **2.6 Existing policies**

The Safeguarding Policy covers keeping the children safe and the Behaviour policy helps ensure good behaviour on the school bus. There are no specific School policies in relation to travel.

## **2.7 Future developments**

It is expected that the numbers on roll at Longford Primary School will increase after our next Ofsted inspection. Many new houses have been built in East Harnham which is in our catchment area.



### 3. SURVEY RESULTS

---

To determine school travel patterns, understand the reasons for current travel choices and identify travel preferences, the pupils, parents and staff have all been consulted through questionnaires and surveys. Negative aspects are shown in red, positives in green.

#### 3.1 Historical data

##### 3.1a Pupil distances from school – October 2014

Using data from the October 2014 school census, the following table provides a breakdown of pupil distances from school:

Distance from School (miles)	No. of Children	% of School
Less than 0.5	4	9%
<b>0.5 to 0.99</b>	<b>12</b>	<b>27%</b>
<b>1.0 to 1.49</b>	<b>15</b>	<b>34%</b>
1.5 to 1.99	8	18%
2.0 to 2.99	3	7%
3.0 to 5.00	2	5%
Over 5.0	0	
Not Known	0	
TOTAL number of children	44	100%

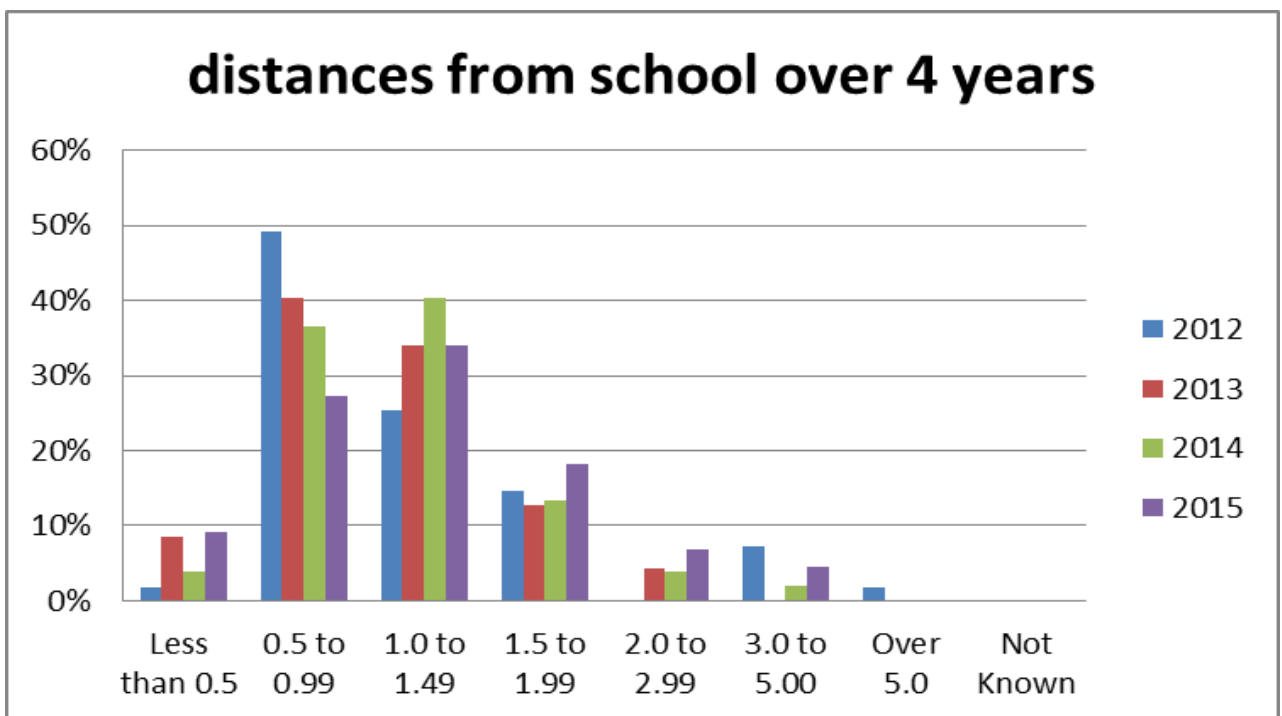
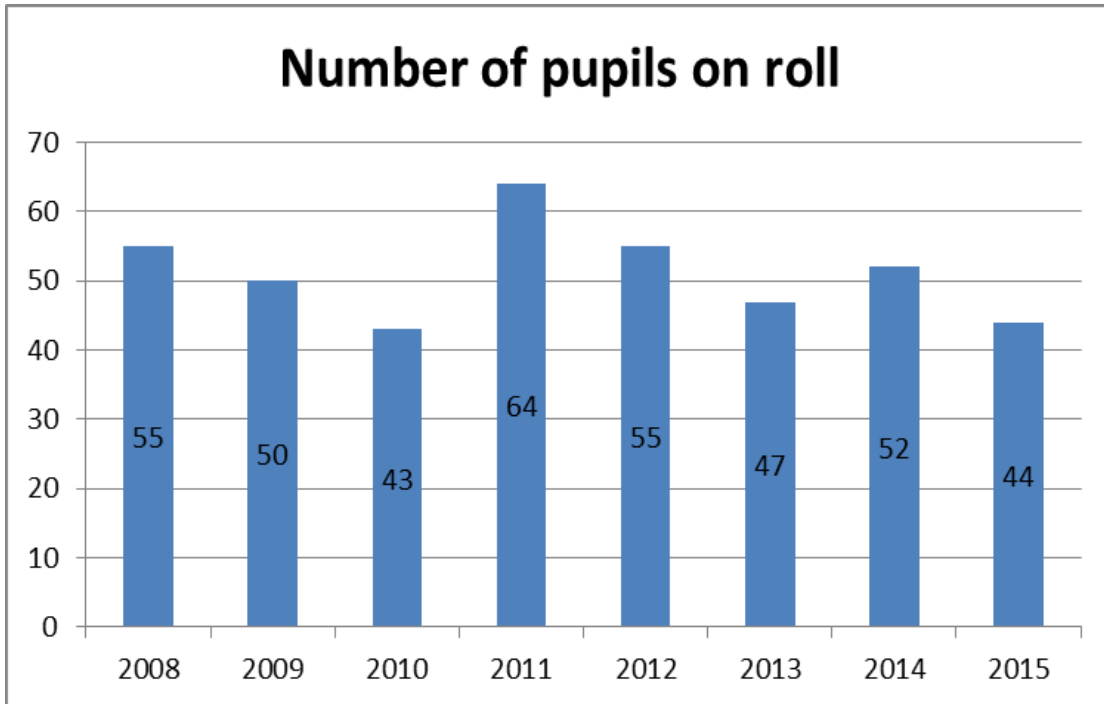
In October 2014, more than half the children lived between 0.5 and 1.49 miles from the school (shown in **bold**) with 27% of the children living within walking distance (0.5 mile).

Children living in the Odstock and Nunton area would not be able to walk/cycle/scoot as **there is not a safe pavement/cycle route along the A338 (and it may be considered too far)**.

Some children who attend the school live on the other side of town.

##### 3.1b Pupil distances from school – 2012-2015

The following two charts show the changes in the roll over the last few years (2012 – 2015 most relevant) and the breakdown of pupil distances for the last 4 years:

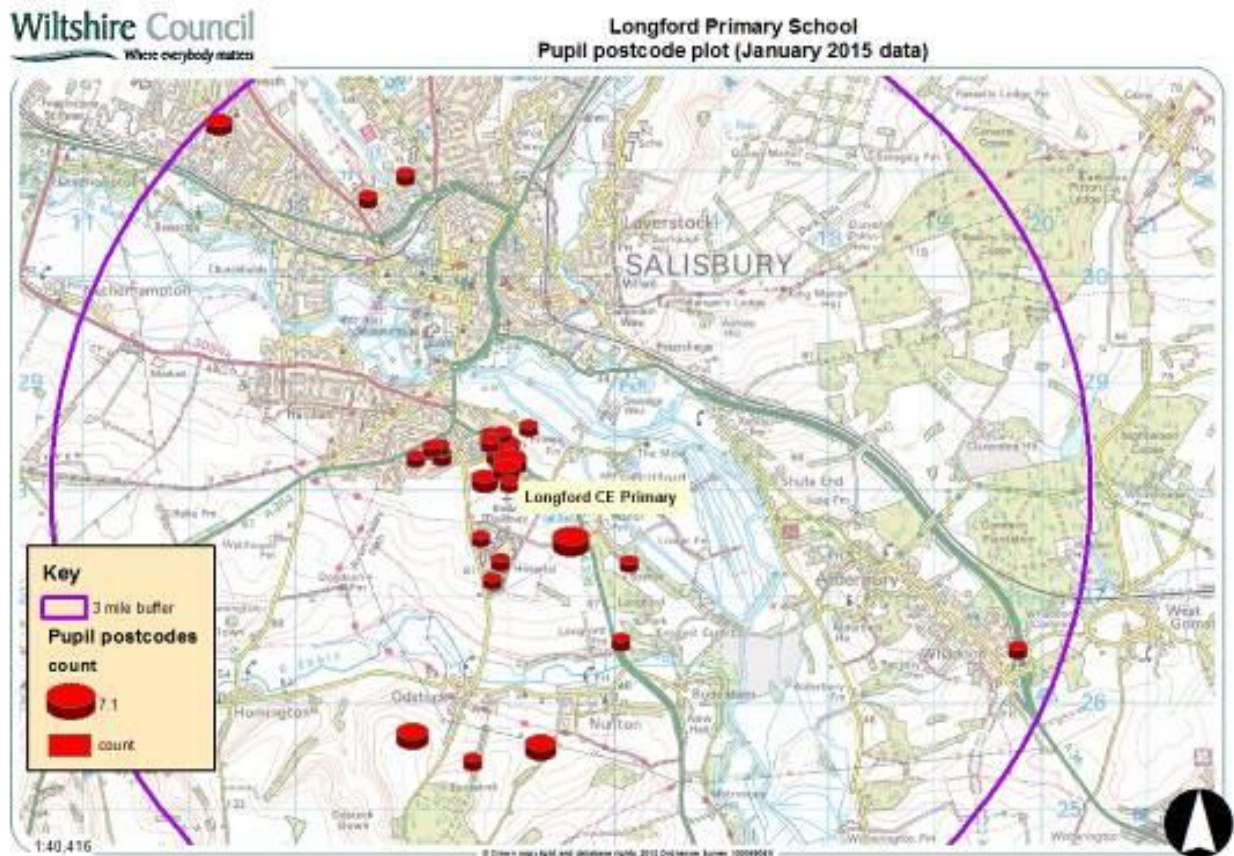


This shows that the situation has remained pretty stable over the last 4 years i.e. most children live between 0.5 and 1.49 miles from the school. There seems to be an upward trend in the number of children living between 1.0 and 1.49 miles from the school which is probably due to the new houses being built in East Harnham.



### 3.1c Distribution of pupils – October 2014

Using the postcode data from the October 2014 school census, a pupil postcode map has been created which shows the distribution of the pupils in relation to the school. The larger the pie chart, the more pupils live at that postcode.



It can be seen that 2 children live about 3 miles from the school. Most children live within the catchment area (see map in section 2.1) however it looks like about 5 children who attend the school are out-of-catchment.

### 3.1d Mode of travel - 2011

Based on school census data, the following table provides mode of travel data for the school collected in 2011.

NB. Across the county, mode of travel data has not been collected in the school census since January 2011.

<b>Mode of travel</b>	<b>2011</b>
Walk	13%
Cycle	6%
<b>School Bus</b>	<b>56%</b>
School Taxi	0%
Public Bus	0%
Bus (type unknown)	0%
Train	0%
Car / Van	19%
Car Share	5%
Other	2%

Most of the children travelled to school using the school bus (shown in **bold**) which is probably a reflection of the two schools having merged the year before.

### 3.2 Pupil survey (February 2015)

The teachers discussed the pupil survey with each of the 3 classes using a hands-up method. A sample of the in-class survey can be found in the Appendix.

The following table and chart summarise the findings from the survey and shows current (actual) mode versus preferred mode. The most frequent modes are shown in **bold**.

Mode of travel	No.	Current Mode (%)	No.	Preferred mode (%)
Walk	5	12%	6	15%
Cycle	5	12%	14	<b>34%</b>
Scooter	0		8	<b>20%</b>
Park and Stride	1	2%	1	2%
School Bus	16	<b>38%</b>	7	17%
School Taxi	0		0	
Public Bus	0		0	
Bus (type unknown)	0		0	
Train	0		0	
Car / Van	13	<b>31%</b>	3	7%
Car Share	2	5%	2	5%
Other	0		0	
TOTAL	42	100%	41	100%

The table shows that most children currently travel by school bus or car.

**Most children would prefer to cycle or scoot to school than they currently do.** The reasons given below explain why this may not be feasible. Children from Britford and East Harnham could potentially walk to school although there are **concerns about the speed of the traffic on the A338 and the width of the pavement going South on the A338.**

It should be noted that the survey was carried out in February when the weather was not conducive to walking/cycling/scooting! Anecdotal evidence shows that in June more children walked/cycled/scooted.

As part of the in-class discussions, the pupils discussed the following questions and the responses are shown below:

#### **What prevents you from walking, cycling and using the bus to get to school?**

- If people are busy with work
- If you're too busy in the morning
- Being lazy
- Takes too long to walk
- **Cycling is dangerous**
- **Traffic jams**

- **Problems with bike**
- If cows walk across the road (*this does happen!*)

**What changes would help solve these problems to encourage you to walk, cycle or use the bus to come to school?**

- Traffic lights would stop the cars
- Slow the traffic with signs
- If the bikes were lent by the school and maintained, with an adult to accompany
- Get up earlier
- If the horses/cows were not in the road.

**Why would you like to walk, cycle or travel by bus to school?**

- Fresh air
- Exercise
- Fun
- You can walk with friend
- Because I don't get to use my bike every day
- Because my scooter has wheels
- Could take the dog for a walk at the same time.

The barriers to walking/cycling/scooting/getting the bus are valid. Most of the suggested solutions are practical and will be incorporated into the action plan in Section 5.

### 3.3 Parental Questionnaire (February 2015)

The parent questionnaires were given out to parents/carers attending Parents evening and completed whilst waiting or handed in later. A sample of the questionnaire can be found in the Appendix. One questionnaire was completed per family. 21 questionnaires were completed. At the time of the survey there were 38 families attending the school hence the response rate was 55%.

Parents were asked how their children currently travel to and from school as well as how they would prefer to; the results are as follows:

Mode of travel	No. of families	Current mode (%)	No. of families	Preferred mode (%)
Car share	1	5%	1	5%
Car	<b>8</b>	<b>38%</b>	5	24%
Park and stride	0	0%	1	5%
scooter	0	0%	0	0%
walk	5	24%	<b>6</b>	<b>29%</b>
cycle	1	5%	1	5%
school bus	<b>6</b>	<b>29%</b>	6	29%
taxi	0	0%	0	0%
train	0	0%	1	5%
TOTAL	21	100%	21	100%

The table shows that most children travel to school by school bus or car (shown in **bold**); this agrees with the pupil survey results.

It is good to see that many parents would prefer not to use the car.

**The three most frequently cited reasons for people using their current mode of transport to get to school are:**

- It is most appropriate for the distance (11 families)
- **There is no reasonable alternative (5 families)**
- **You are confident your child has got to school safely (5 families)**

**From the eight car users who responded, the three main answers which would encourage them to send their child to school by their preferred mode of travel (each cited by two families) were:**

- **Less/slower traffic near the school/on the journey**
- **More/better road crossings for pedestrians on school routes**
- **Road safety training (WalkSafe, Bikeability).**

These could be possible actions that the school could take forward and will be included in the action plan in Section 5.

Four respondents offered to help with the STP and are all involved with the working group.

### 3.4 Staff Questionnaire (February 2015)

The school travel questionnaire was issued to all members of staff to look at how staff currently travel to school and how they would prefer to travel. The questionnaire also tried to identify barriers to using sustainable transport and some possible solutions. A sample of the questionnaire can be found in the Appendix.

Mode of travel	No.	Current mode (%)	No.	Preferred mode (%)
Car	6	67%	5	56%
Car Share	2	22%	2	22%
Park and Stride	0		0	
School Bus	0		0	
Rail	0		0	
Bus	0		0	
Bicycle	0		1	11%
Walk	1	11%	1	11%
Other	0		0	
TOTAL	9	100%	9	100%

The reasons for staff not using sustainable modes of travel to get to school were:

- Things to carry
- Lack of flexibility/convenience
- Too dangerous on bike
- Too far to walk
- Insufficient public transport (e.g. no direct route; takes too long)
- Cost of public transport
- Other commitments.

Most respondents said that they would not be able to consider other modes of travel. One stated that facilities for cycling could be improved, for example cycle paths and better visibility of cars coming out of driveways.

### 3.5 Additional Surveys

There is a regular Metrocount (traffic survey) on the A338 just outside the school.

In the past, Reception children have counted the number of vehicles passing as part of a project.



## 4. CURRENT PROBLEMS

---

Through consultation with key stakeholders, we have identified several current transport issues/problems.

Current travel and transport issues/problems	How & when was this identified?	Possible/suggested solutions
1. Families are using the car (and using school car park) when they would prefer to walk/cycle/scoot	Pupil survey Feb 2015  Parent questionnaire Feb 2015	<ul style="list-style-type: none"> <li>• Green travel week/days ('walk to school week' nationally in May &amp; October) – with incentive</li> <li>• Inter-class challenges (points awarded for travelling sustainably)</li> <li>• Secure cycle/scooter storage</li> <li>• Car share register</li> <li>• Walking bus from East Harnham direction</li> <li>• Parent travel information packs - Connecting Wiltshire <a href="http://www.connectingwiltshire.co.uk/plan-a-journey/travel-to-school/">www.connectingwiltshire.co.uk/plan-a-journey/travel-to-school/</a></li> <li>• Sustainable transport awareness raising assemblies</li> <li>• Parents' forums focussed on sustainable travel</li> </ul>

		<p>options</p> <ul style="list-style-type: none"> <li>• Publicity on website</li> <li>• Rejuvenate 'healthy school' status</li> </ul>
<p>2. From A338 North (East Harnham) – walking and cycling is not safe due to speed of traffic – drivers not aware of 30mph limit</p>	<p>Pupil survey Feb 2015</p> <p>Parent questionnaire Feb 2015</p> <p>Staff questionnaire 2015</p> <p>Comment from parents and governors 2014/15</p>	<ul style="list-style-type: none"> <li>• Road safety training e.g. WalkSafe, Bikeability, scooter skills (Salisbury Road and Mountain cycling club sessions to build up confidence on bikes)</li> <li>• Curriculum links – speak to children about road safety</li> <li>• Source high visibility tabards</li> <li>• On-highway measures such as 20mph speed restriction, signs, flashing signs, road markings, speed indicator device (flashing 30mph sign), railings, more/better road crossings for pedestrians on school routes - <i>to be determined through analysis of STP surveys and feasibility study as a result of a successful application for the "Taking Action on School Journeys Challenge"</i></li> <li>• Slow the traffic with road signs drawn by children (poster – competition)</li> </ul>



		<ul style="list-style-type: none"> <li>• Support Brake's GO 20 Campaign <a href="http://www.brake.org.uk/campaigns/flagship-campaigns/go-20">www.brake.org.uk/campaigns/flagship-campaigns/go-20</a></li> <li>• Encourage volunteers to get involved with Community Speed watch</li> </ul>
<p>3. From A338 South (Britford direction) – walking and cycling is not safe due to speed of traffic – drivers not aware of 30mph limit and pavement is very narrow going South on the A338.</p>	<p>Pupil survey Feb 2015</p> <p>Parent questionnaire Feb 2015</p> <p>Comment from parents and governors 2014/15</p>	<ul style="list-style-type: none"> <li>• Road safety training e.g. WalkSafe, Bikeability, scooter skills (Salisbury Road and Mountain cycling club sessions to build up confidence on bikes)</li> <li>• Curriculum links – speak to children about road safety</li> <li>• Source high visibility tabards</li> <li>• On-highway measures such as 20mph speed restriction, signs, flashing signs, road markings, speed indicator device (flashing 30mph sign), railings, more/better road crossings for pedestrians on school routes - <i>to be determined through analysis of STP surveys and feasibility study as a result of a successful application for the "Taking Action on School Journeys Challenge"</i></li> <li>• Slow the traffic with road signs drawn by children (poster – competition)</li> </ul>

		<ul style="list-style-type: none"> <li>• Support Brake's GO 20 Campaign <a href="http://www.brake.org.uk/campaigns/flagship-campaigns/go-20">www.brake.org.uk/campaigns/flagship-campaigns/go-20</a></li> <li>• Encourage volunteers to get involved with Community Speed watch</li> </ul>
4. Drivers not aware of presence of school (there are only 2 'School' road signs on the A338).	Comment from parents and governors 2014/15	<ul style="list-style-type: none"> <li>• Paint school fence at front of the school</li> <li>• Place figurines of children by the road!</li> <li>• On-highway measures such as signs, flashing signs and road markings - <i>to be determined through analysis of STP surveys and feasibility study as a result of a successful application for the "Taking Action on School Journeys Challenge"</i></li> </ul>
5. From A338 South (Britford to Nunton junction) there is not a safe pavement/cycle route which means children living in the Odstock and Nunton area cannot walk/cycle/scoot to school	Pupil survey Feb 2015	<ul style="list-style-type: none"> <li>• Extend the cycle path from Britford to Nunton junction - <i>to be determined through analysis of STP surveys and feasibility study as a result of a successful application for the "Taking Action on School Journeys Challenge"</i></li> </ul>
6. Traffic jams	Pupil survey Feb 2015	<ul style="list-style-type: none"> <li>• Parent travel information packs - Connecting Wiltshire <a href="http://www.connectingwiltshire.co.uk/plan-a-journey/travel-to-school/">www.connectingwiltshire.co.uk/plan-a-journey/travel-to-school/</a></li> </ul>

		<ul style="list-style-type: none"> <li>• Sustainable transport awareness raising assemblies</li> <li>• Parents' forums focussed on sustainable travel option</li> <li>• Publicity on website</li> </ul>
7. Problems with bikes	Pupil survey Feb 2015	<ul style="list-style-type: none"> <li>• Bike maintenance sessions – Doctor Bike, Urge cycles</li> <li>• Pool bikes</li> </ul>
8. Congestion in school car park and parking down entrance to school obstructing emergency vehicle access	Observation by Head teacher 2014	<ul style="list-style-type: none"> <li>• Encourage 'park and stride'</li> <li>• Signage</li> </ul>
9. Insufficient public transport (e.g. no direct route; takes too long)	Staff questionnaire Feb 2015	<ul style="list-style-type: none"> <li>• Provide information on public transport 'Connecting Wiltshire' <a href="http://www.connectingwiltshire.co.uk/">www.connectingwiltshire.co.uk/</a></li> <li>• Publicity on website</li> </ul>

## **5. OBJECTIVES, TARGETS & ACTION PLAN**

---

The following objectives, targets and actions have been set using the findings from the surveys and consultation that has been undertaken to date. Any SMART targets have taken into account the preference data established by the surveys.

Each action within the plan is set out under 7 headings:

### **Action**

This describes the action point that has been agreed by the working group.

### **How will it be achieved?**

Indicates the tasks required to complete the action point.

### **Person responsible**

This provides a named person who is responsible for completing the action point. Where possible, a variety of people should be given responsibilities for different action points within the plan, including members of the schools council; this helps ensure the longevity of the Travel Plan.

### **Parties involved**

This lists the people that will be involved / affected by the action point – further consultation with these people may be required to achieve a satisfactory outcome.

### **Timescale / completion date**

This gives a proposed date for the completion of the action. It also helps establish whether an action has been completed when monitoring the plan.

### **Funding**

This identifies if there is a cost element to the action. It may also identify where the money comes from, if currently available, or whether external funding needs to be sourced.

### **Evaluation / Review**

This column is to help with the monitoring of each action. The progress can be updated throughout the year – not only does this help keep the travel plan current but it also reduces the work required when the travel plan needs updating.

**Objective 1: Encourage the use of sustainable travel (walking, cycling, scooting, public bus, car-share)**  
**Target: Reduce the number of children travelling to school by car by 20% by July 2016.**

No.	Action	How will it be achieved?	Person responsible	Parties involved	Timescale / completion date	Funding	Evaluation / Review
1	Encourage general use of sustainable transport	<ul style="list-style-type: none"> <li>• Curriculum links – speak to children about sustainable transport</li> <li>• Inter-class challenges - points/prizes awarded for travelling sustainably</li> <li>• Provide information on website - Connecting Wiltshire <a href="http://www.connectingwiltshire.co.uk/plan-a-journey/travel-to-school/">www.connectingwiltshire.co.uk/plan-a-journey/travel-to-school/</a></li> </ul>	<p>HT</p> <p>STP working group</p> <p>Philippa Hemming</p>	<p>Teachers</p> <p>Staff</p> <p>Webmaster</p>	<p>End of summer term 2016</p> <p>End of summer term 2016</p> <p>End of Autumn term 2015</p>	<p>None</p> <p>Prizes ?FOLS (PTA)</p> <p>None</p>	STP working group half-termly meeting
2	Encourage walking to school (as opposed to	<ul style="list-style-type: none"> <li>• Take part in 'walk to school week'</li> </ul>	STP working group	HT & Staff	End of summer term 2016	None	STP working group half-termly meeting

	driving)	<p>nationally in May/October</p> <ul style="list-style-type: none"> <li>• Promote 'park and stride'</li> <li>• Signage in car park/close school gate</li> <li>• Investigate interest in 'walking bus' from East Harnham direction</li> </ul>	<p>STP working group</p> <p>HT</p> <p>STP working group</p>	<p>HT</p> <p>STP working group</p> <p>HT</p>	<p>End of Spring term 2016</p> <p>End of Autumn term 2015</p> <p>End of Spring term 2016</p>	<p>None</p> <p>None</p> <p>None</p>	
3	Encourage cycling/scooting to school (as opposed to driving)	<ul style="list-style-type: none"> <li>• Obtain a cycle/scooter shelter to fit stand</li> <li>• Investigate bike maintenance sessions – Doctor Bike, Urge cycles</li> <li>• Request consideration of extending the cycle path from Britford to Nunton junction -</li> </ul>	<p>Governors</p> <p>STP working group</p> <p>Philippa Hemming</p>	<p>Local secondary school</p> <p>N/A</p> <p>to be determined through analysis of STP surveys and feasibility study as a</p>	<p>End of summer term 2016</p> <p>End of Spring term 2016</p> <p>End of Autumn term 2015</p>	<p>application for the "Taking Action on School Journeys Challenge"</p> <p>N/A</p>	STP working group half-termly meeting

				result of a successful application for the "Taking Action on School Journeys Challenge"			
4	Encourage use of public bus and school bus (as opposed to driving)	<ul style="list-style-type: none"> <li>• Provide information on website re public transport 'Connecting Wiltshire' <a href="http://www.connectingwiltsire.co.uk/">www.connectingwiltsire.co.uk/</a></li> <li>• Investigate whether there could be a school bus pick-up at Bodenham</li> </ul>	Philippa Hemming  HT	Webmaster  STP working group	End of Autumn term 2015  End of Spring term 2016	None  None	STP working group half-termly meeting
5	Encourage car-sharing	<ul style="list-style-type: none"> <li>• Investigate interest in setting up a car share register</li> </ul>	STP working group	Parents & Staff	End of Spring term 2016	None	STP working group half-termly meeting

**Objective 2: Provide a safer environment for pupils travelling to school along the A338**

**Target: Reduce the speed of passing vehicles to 30mph by July 2017.**

No.	Action	How will it be achieved?	Person responsible	Parties involved	Timescale / completion date	Funding	Evaluation / Review
6	Increase driver awareness of presence of school	<ul style="list-style-type: none"> <li>• Paint school fence (colourfully!) at front of the school</li> <li>• Request consideration of on-highway measures such as signs, flashing signs and road markings</li> </ul>	<p>STP working group</p> <p>Philippa Hemming</p>	<p>Parents</p> <p>to be determined through analysis of STP surveys and feasibility study as a result of a successful application for the "Taking Action on School Journeys Challenge"</p>	<p>End of Spring term 2016</p> <p>End of Autumn term 2015</p>	<p>Paint ?FOLS (PTA)</p> <p>N/A</p>	<p>STP working group half-termly meeting</p>
7	Increase 'road sense' of children	<ul style="list-style-type: none"> <li>• Investigate road safety training e.g. WalkSafe, Bikeability, scooter skills (Salisbury Road and Mountain cycling club sessions to build up</li> </ul>	<p>STP working group</p>	<p>N/A</p>	<p>End of Spring term 2016</p>	<p>None</p>	<p>STP working group half-termly meeting</p>



		confidence on bikes)  •Curriculum links – speak to children about road safety  •Source high visibility tabards	HT  Philippa Hemming	Staff  Specsavers, Salisbury	End of summer term 2016  End of Spring term 2016.	None  None	
8	Slow the traffic	•Slow the traffic with road signs drawn by children (poster competition)  •Investigate Brake's GO 20 Campaign <a href="http://www.brake.org.uk/campaigns/flagship-campaigns/go-20">www.brake.org.uk/campaigns/flagship-campaigns/go-20</a>  •Encourage volunteers to get involved with Community Speed watch  •Request consideration of on-highway measures such as 20mph	STP working group  STP working group  Philippa Hemming  Philippa Hemming	HT & Staff & children  N/A  Britford Parish Council  to be determined through analysis of STP surveys	End of summer term 2016  End of Spring term 2016  End of Spring term 2016  End of Autumn term 2015	None  None  None  N/A	STP working group half-termly meeting

		speed restriction, signs, flashing signs, road markings, speed indicator device (flashing 30mph sign), railings, more/better road crossings for pedestrians on school routes		and feasibility study as a result of a successful application for the "Taking Action on School Journeys Challenge"			
--	--	--	--	--	--	--	--

**Objective 3: Promote the health benefits to children (and parents) of walking / cycling / scooting to school**  
**Target: Obtain Healthy School bronze level by December 2016.**

<b>No.</b>	<b>Action</b>	<b>How will it be achieved?</b>	<b>Person responsible</b>	<b>Parties involved</b>	<b>Timescale / completion date</b>	<b>Funding</b>	<b>Evaluation / Review</b>
11	Investigate rejuvenating 'healthy school' status	<ul style="list-style-type: none"> <li>• See Wiltshire 'healthy schools' website</li> </ul>	HT	Staff STP working group	End of summer term 2016	Cost	STP working group half-termly meeting
12	Increase children's awareness of health benefits	<ul style="list-style-type: none"> <li>• Curriculum links – use PSHE to link sustainable transport and how to keep fit and healthy</li> </ul>	HT	Staff	End of summer term 2016	None	STP working group half-termly meeting

## **6. EVIDENCE OF CONSULTATION**

---

Throughout the STP, a variety of people have been consulted to make sure that the views from all key parties have been elicited.

### **6.1 Pupils**

- Pupil in-class surveys – see section 3.2 (Feb 2015)

### **6.2 Parents and carers**

- STP working group – see section 2.3 (met Feb 2015 – to date)
- Parental questionnaire – see section 3.3 (Feb 2015)
- Consultation article in school newsletter  
<http://www.longford.wilts.sch.uk/page/?title=Newsletters+and+Calendar&pid=34> (Nov & Dec 2015)
- Draft STP put on school website ‘Latest News’ page  
<http://www.longford.wilts.sch.uk/page/?title=Latest+News&pid=94> (Nov & Dec 2015)
- Discussed with parents after school worship and in playground (Feb 2015 – to date)

### **6.3 Staff**

- Staff questionnaire – see section 3.4 (Feb 2015)
- Head teacher reviewed draft STP
- Copy of draft STP available in staff room (Nov & Dec 2015)

### **6.4 Governors**

- STP working group (met Feb 2015 – to date)
- Copy of draft STP emailed to all Governors for feedback (Nov 2015)
- Discussed at Full Governing Body meeting (Nov 2015)

### **6.5 Wider consultation**

- School Travel Advisor advised (Feb 2015 – to date)
  - Copy of draft STP emailed to Chair Britford Parish Council for feedback (Nov 2015)
  - Discussed with Chair of Odstock Parish Council [includes Nunton and Bodenham] (Nov 2015)
  - Discussed with school neighbours (Nov 2015)
-

## **7. PROPOSALS FOR MONITORING AND REVIEW**

---

This plan will be reviewed in 1 year (Autumn term 2016); this is appropriate for the action plan completion dates.

The review will include an update of baseline travel survey information (via the January School Census). The review will also consider pupil travel needs arising from new developments in education and transport provision and that the plan will be revised as necessary to take account of these.

The evaluation/review column of the action table will be used to help monitor progress throughout the year against the set objectives, targets and actions.

Philippa Hemming (Parent Governor) is responsible for overseeing both the survey and plan review.

## **8. OWNERSHIP AND SUSTAINABILITY**

---

The the school demonstrates ownership and sustainability of the STP by:

- continuing the STP Working Group
- involving the new Head Teacher (Jan 2016)
- updating the STP section on the school website
- making the plan available to external parties by displaying on the noticeboard in the school office

## 9. SIGNATURES OF ENDORSEMENT

---

This agreement will be signed by, or on behalf of, representatives from the teaching staff, pupils, parents, governors and the Local Authority.

The following signatures confirm that the school management have read the contents of this document and that the school commits itself to make every effort to resolve the problems identified within the Travel Plan and to implement the actions identified. The school further acknowledges that it will strive to achieve all targets highlighted in this document and commits to the annual review and monitoring of the plan.

Wiltshire Council has reviewed this document against the DfT/DCSF quality assurance guidance and confirms that it meets the requirements for approval (subject to quality assurance by the Regional School Travel Advisor).

---

Headteacher: *N Shrimpton (electronic signature not available)*

Print name: NAOMI SHRIMPTON      Date: 14.12.15

Chair of Governors: *S. Fowler*

Print name: STUART FOWLER      Date: 16.12.15

Member of School Council: N/A

Print name: .....      Date: .....

---

School Travel Plan Advisor

Wiltshire Council

**Ruth Durrant**

Date: .....

---

## **APPENDIX – SAMPLES OF SURVEYS / QUESTIONNAIRES**

Due to formatting issues, the surveys/questionnaires will be available on the school website: <http://www.longford.wilts.sch.uk/primary-school-salisbury/?pid=1>